

## ▲ BEAM BRACKETS

▲ ART NO: 912168, 912169, 912170, 912171

### BEAM BRACKET WOOD PRIMARY

WEIGHT 4,0 KG. ART NO 912168

### BEAM BRACKET WOOD SECONDARY

WEIGHT 2,3 KG. ART NO 912169

### BEAM BRACKET ALUMINIUM PRIMARY

WEIGHT 3,0 KG. ART NO 912170

### BEAM BRACKET ALUMINIUM SECONDARY

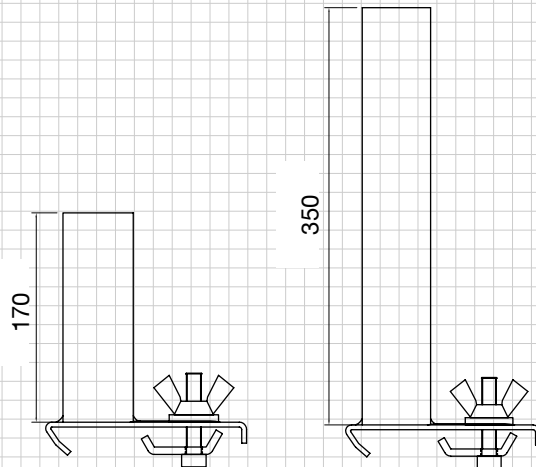
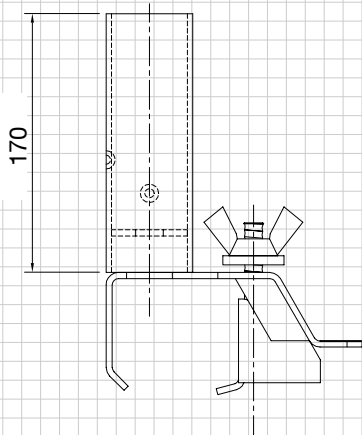
WEIGHT 2,3 KG. ART NO 912171

- ▲ INTEGRATED POST LOCKING
- ▲ HOT DIP GALVANIZED
- ▲ QUICK SCREW LOCKING
- ▲ DELIVERED IN STACKABLE STILLAGE

BEAM BRACKET WOOD  
PRIMARY AND SECONDARY



BEAM BRACKET ALUMINIUM  
PRIMARY AND SECONDARY



We reserve the right to make technical changes.