

WHAT TO LOOK FOR WHEN INSPECTING A SCISSORSAFE ANCHORAGE TOOL

Examine the anchor carefully, pick it up and visually inspect it for any damage or misalignment.

SCISSORSAFE ANCHORAGE TOOL CHECKLIST

- Are the blades in good condition?
- Are the blades bent or deformed?
- Are the pivot pin and nut in good condition?
- Is the pivot pin straight?
- Is the weld between pivot pin and nut?
- Are the blades moving freely?
- Is there evident corrosion?

LEGAL REQUIREMENTS AND STANDARDS

Employers are to ensure Personal Fall Protection equipment (PFP) is maintained in good condition, including enabling appropriate replacement when so needed. PFP which is exposed to conditions causing deterioration which is liable to result in dangerous situations should be inspected at suitable intervals and each time exceptional circumstances which might jeopardise safety have occurred.

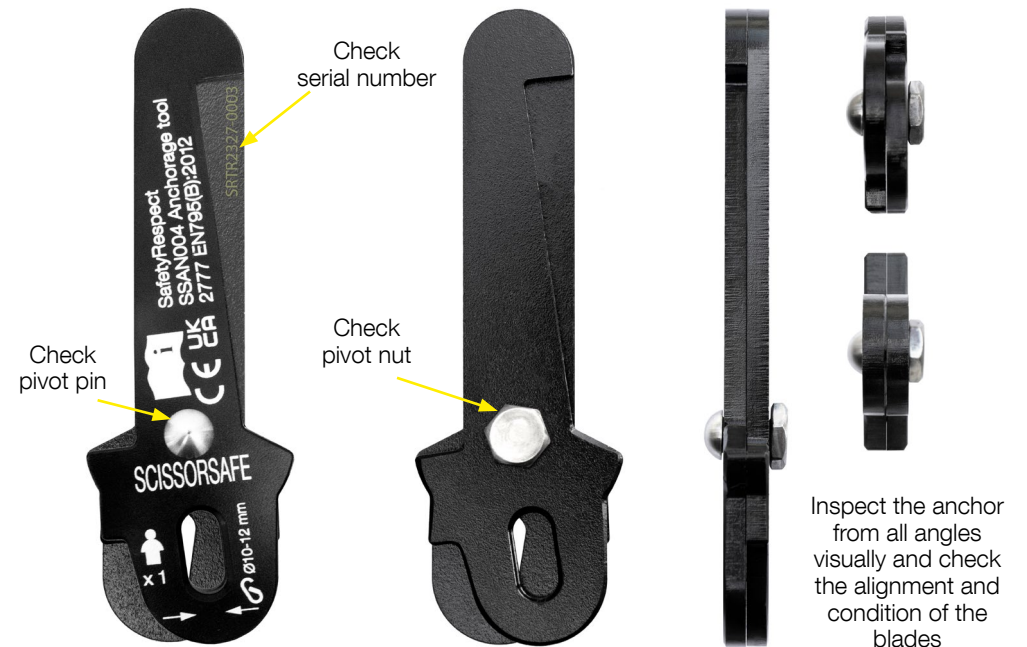
The European Standard EN 795 specifies requirements for performance and associated test methods for single-user anchor devices which are intended to be removable from the structure. These anchor devices incorporate stationary or travelling (mobile) anchor points designed for the attachment of components of a personal fall protection system in accordance with EN 363.

In EN 365:2004 Personal protective equipment against falls from a height, general requirements are provided for instructions for use, maintenance, periodic examination, repair, marking and packaging gives general requirements for periodic inspection, instructions for use and marking of PFP. To counter the causes of degradation listed in the introduction, the European standard states that components should be examined at least every twelve months, although, inspection is usually recommended more frequently than this.

INSPECTION AND RECORD CARD

SCISSORSAFE ANCHORAGE TOOL

WHAT TO LOOK FOR WHEN INSPECTING A SCISSORSAFE ANCHORAGE TOOL



IMPORTANT

If you are in doubt about the condition, certification dates or safe use of the harness please contact us.

SAFETYRESPECT

info@safetyrespect.com | +46 (0)63130400

USER RECORD CARD

SCISSORSAFE ANCHORAGE TOOL

PRODUCT CODE SSAN004	COMPONENT Scissorsafe anchorage tool		SERIAL NUMBER	THIS PRODUCT IS VALID FOR 10 YEARS FROM DATE OF MANUFACTURE BUT HAS A SERVICE LIFE OF 5 YEARS FROM DATE OF FIRST USE
CUSTOMER	DATE OF MANUFACTURE (DD/MM/YYYY)	DATE OF PURCHASE (DD/MM/YYYY)	DATE OF FIRST USE (DD/MM/YYYY)	

ITEMS TO BE INSPECTED	DATES OF INSPECTION (PERIOD)												NOTES
	1	2	3	4	5	6	7	8	9	10	11	12	
Are both steel profiles in good condition?													
Are the steel profiles bent or deformed?													
Is there any evidence of corrosion on the profiles?													
Is there any evidence of cutting on the profiles?													
Is the pivot pin and nut weld intact straight?													
Is the pivot pin straight?													
Are the pivot pin and nut in good condition?													
Is the internal stopper pin preventing free movement (full rotation) of the blades?													
Is the serial number legible?													
INSPECTED BY													
NEXT INSPECTION DUE													
COMMENTS													

IMPORTANT

If you are in doubt about the condition, certification dates or safe use of the adjustable work positioner please contact SafetyRespect.



info@safetyrespect.com | +46 (0)63130400